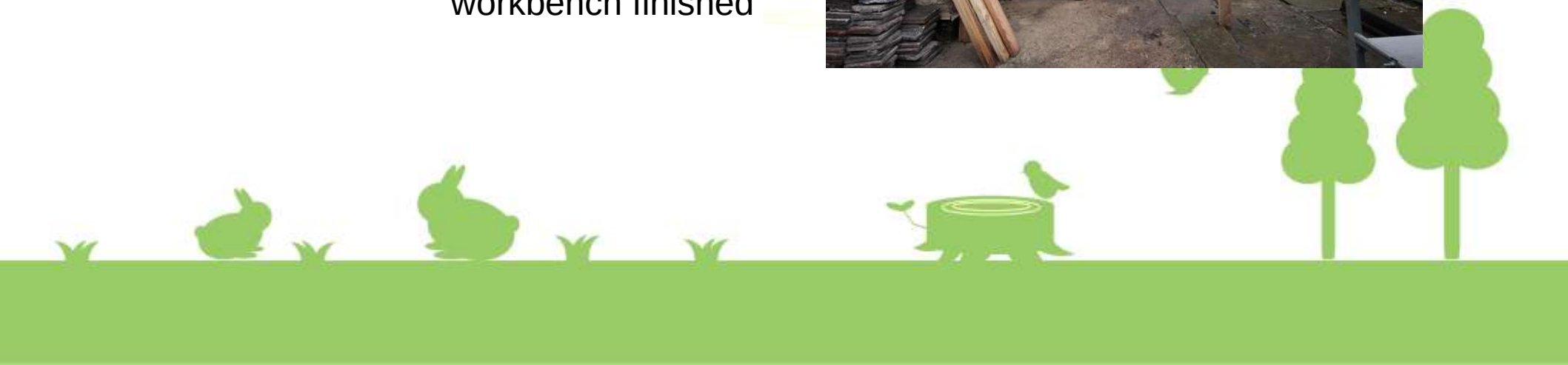


January



Clearing north wall area

Cover for the outside
workbench finished





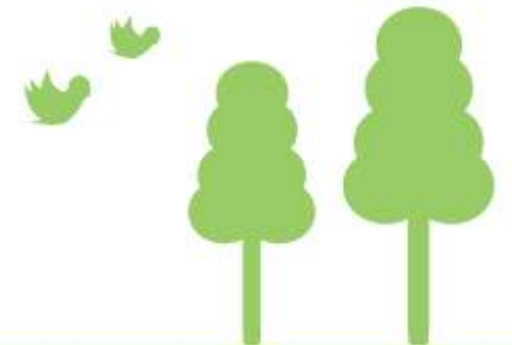
Clearing the cucumber house



New orchard underway!



Clearing the brambles



February



Old tiles removed from the back-sheds

Just bring a few crisps and dips we said!





Starting work on the new sensory garden

We can, at last, get into the back-sheds and start clearing them.





Rails for the new ramp



We've started to re-clear the east gate area



Steps for the new ramp!



March



It was cold!





Spring has sprung!



Preparing large veg beds



We're trying willow hedging



Back-sheds need shoring up





Early sowings



Constructing the new fruit cage



Clearing undergrowth from east slip tree nursery



April

Overwintered crops in the polytunnel



The day the tractor got stuck!





The supports for the new south gate are done!



We have to move this really heavy trough from here.....



...to here





Cucumber house is now fully framed out

Laying out the pergola base





More clearing of the back sheds

Planting the Plum tree,
donated by Wollaton W.I.

